

Figure 1. Bright field image and associated Ni jump ratio map. Brighter areas correspond to higher Ni contents.

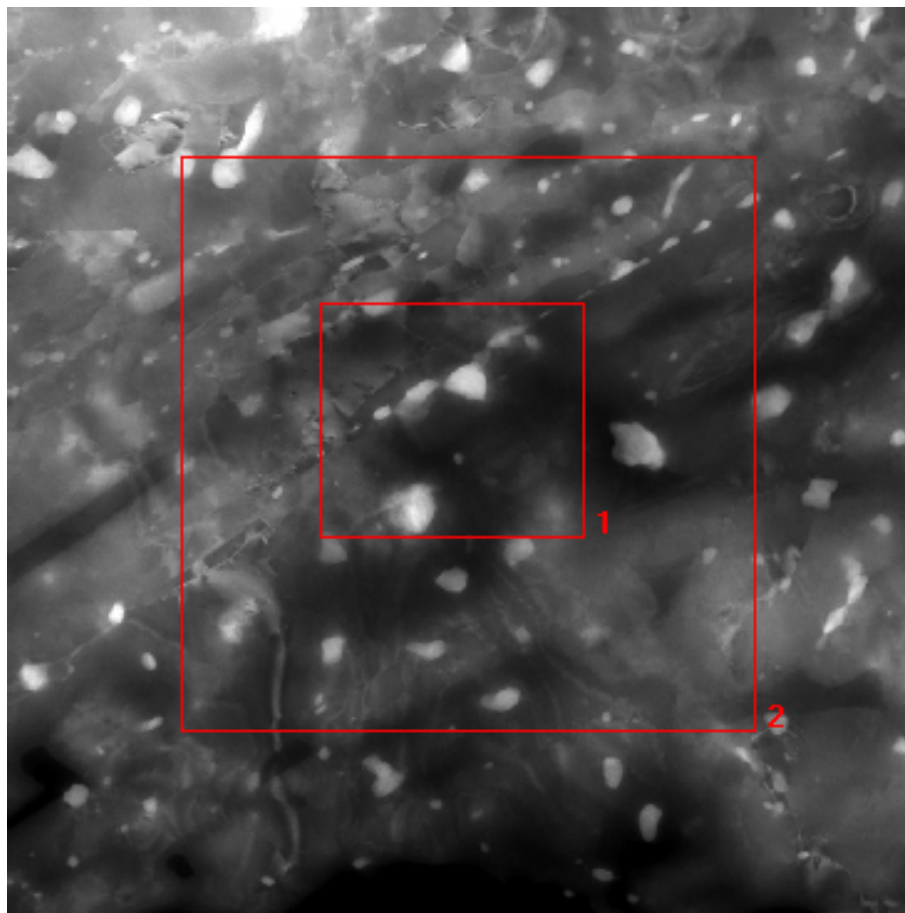


Figure 2. STEM annular dark-field (ADF) image with the area EDX mapped outlines (box 1). Box 2 corresponds to drift correction reference area.

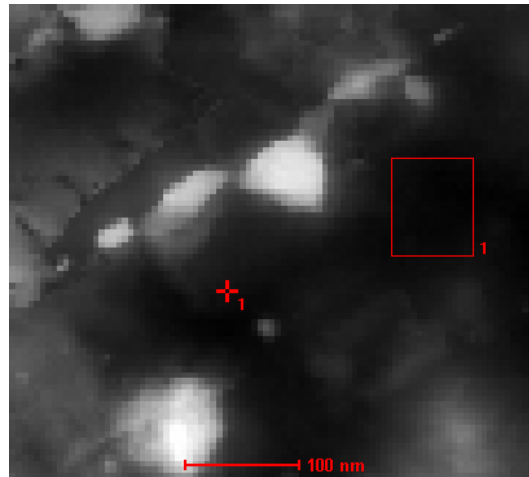


Figure 3. EDX-mapped area.

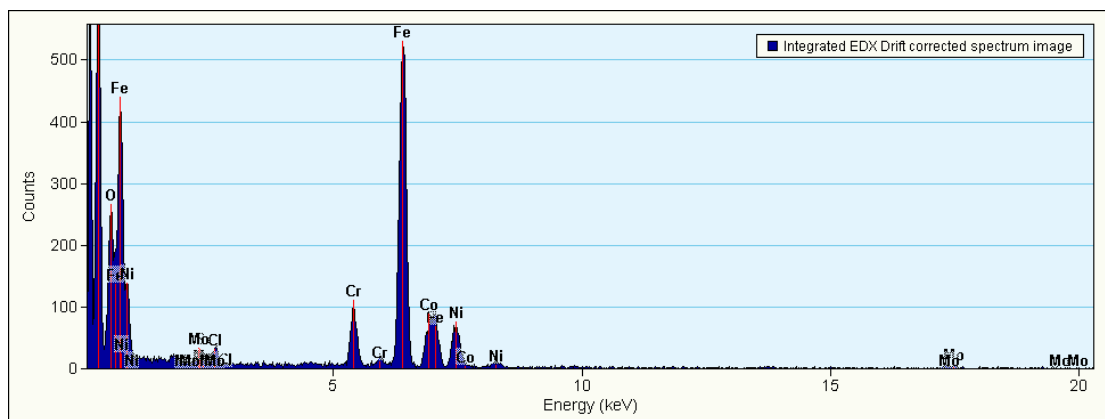


Figure 4. Integrated EDX spectrum from box 1 above.

Peak	Intensity	Uncertainty
Cr-K	1149.800	330.069
Cr-L	981.207	280.243
Fe-K	7666.589	851.730
Fe-L	2055.759	559.561
Co-K	783.511	315.703
Co-L	640.716	427.611
Ni-K	1017.100	314.981
Ni-L	478.597	281.476
Mo-K	99.105	93.204
Mo-L	159.578	114.375
W-L	32.003	66.467
W-M	47.209	58.020

Element	Weight %	Atomic %	Uncertainty %	Correction	k-Factor
Cr(K)	9.641	10.572	0.276	0.991	1.376
Fe(K)	69.141	70.589	0.768	0.994	1.480
Co(K)	7.524	7.279	0.303	0.995	1.576
Ni(K)	9.869	9.586	0.305	0.996	1.592
Mo(K)	2.766	1.643	0.260	0.998	4.581
W(L)	1.056	0.327	0.219	0.752	5.419

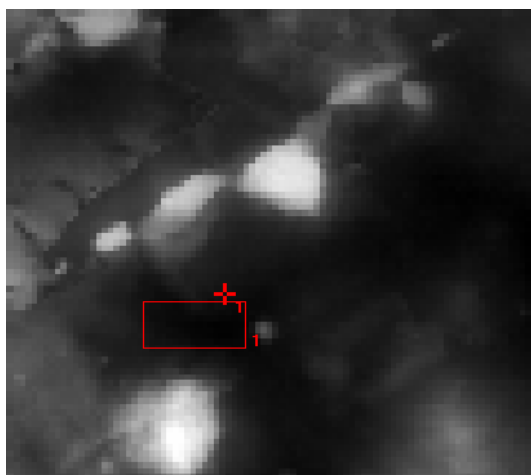


Figure 5. EDX mapped area with analysed area outlined.

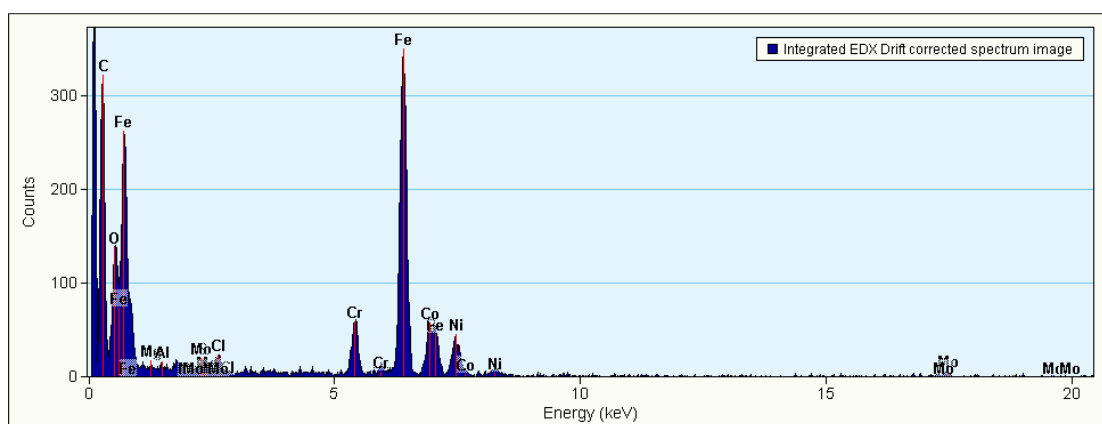


Figure 6. Integrated EDX spectrum from box 1 above.

Peak	Intensity	Uncertainty
Cr-K	683.137	256.867
Cr-L	336.325	196.511
Fe-K	4892.930	680.523
Fe-L	1407.530	382.302
Co-K	455.796	258.952
Co-L	519.723	284.426
Ni-K	671.487	231.758
Ni-L	387.844	202.497
Mo-K	110.419	78.085
Mo-L	105.783	83.351
W-L	9.534	57.540
W-M	80.405	60.233

Element	Weight %	Atomic %	Uncertainty %	Correction	k-Factor
Cr(K)	8.930	9.841	0.335	0.991	1.376
Fe(K)	68.792	70.584	0.956	0.994	1.480
Co(K)	6.824	6.635	0.387	0.995	1.576
Ni(K)	10.157	9.915	0.350	0.996	1.592
Mo(K)	4.804	2.869	0.339	0.998	4.581
W(L)	0.490	0.152	0.296	0.752	5.419

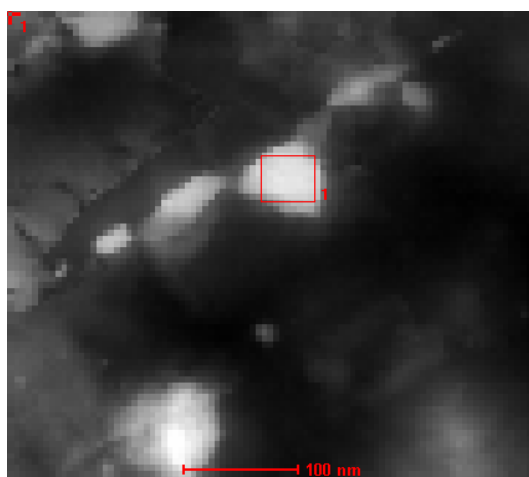


Figure 7. EDX area mapped with precipitate analysed.

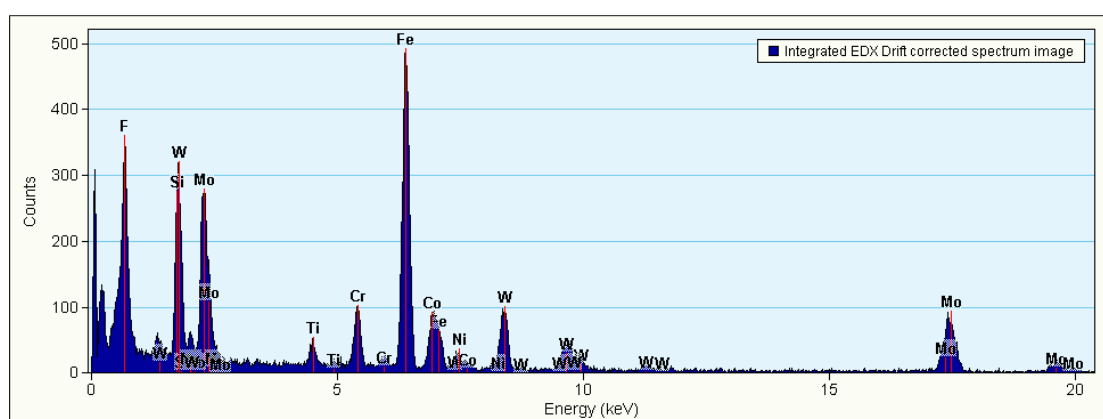


Figure 8. Integrated spectrum from box 1 above.

Peak	Intensity	Uncertainty
Cr-K	1041.950	313.854
Cr-L	450.405	189.574
Fe-K	6860.620	801.821
Fe-L	1918.920	422.787
Co-K	863.499	302.670
Co-L	788.259	296.122
Ni-K	269.512	184.259
Ni-L	207.117	165.040
Mo-K	1973.790	374.692
Mo-L	2301.380	424.038
W-L	1360.650	287.345
W-M	1933.000	404.095

Element	Weight %	Atomic %	Uncertainty %	Correction	k-Factor
Cr(K)	4.813	7.370	0.145	0.991	1.376
Fe(K)	34.085	48.597	0.398	0.994	1.480
Co(K)	4.568	6.172	0.160	0.995	1.576
Ni(K)	1.440	1.954	0.098	0.996	1.592
Mo(K)	30.348	25.187	0.576	0.998	4.581
W(L)	24.743	10.716	0.522	0.752	5.419